

# Málaga

## Townhouse in cerrado de calderón



vastgoed & advies  
**goeman**

[goemanvastgoed.be](http://goemanvastgoed.be)



245 m<sup>2</sup>

4

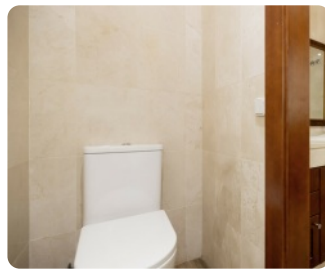
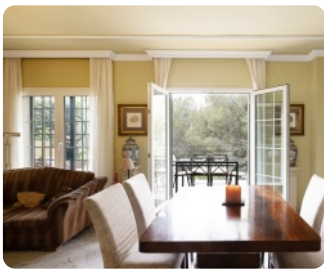
3

### Townhouse in Cerrado de Calderón

Gilmar Consulting Inmobiliario sells, in the exclusive neighbourhood of Cerrado de Calderón, located in the prestigious area of Málaga East, in the urbanization Parque Clavero, this impressive semi-detached house that redefines the concept of elegance and comfort. With an extension of 245 m<sup>2</sup> built, this property is a real estate jewel that you cannot miss out on. Spread over three floors, this semi-detached house has large, bright spaces that guarantee an unparalleled living experience. The lower floor at garden level, the ground floor or street level and the upper floor are connected internally by a wide staircase. On the lower floor there are three bedrooms, one of them with en suite bathroom and the other two with built-in wardrobes, another bedroom, bathroom, hallway and staircase leading to the upper floors. The ground floor, or at street level, consists of hall with built-in wardrobe, bathroom, kitchen with utility room, living-dining room with fireplace, large terrace and stairs. On the upper floor there is a bedroom with large dressing room and large en-suite bathroom, hallway and large terrace with unobstructed views of the lush private garden that surrounds the urbanisation. This semi-detached house is equipped with high quality features, such as varnished wooden interior carpentry and thermally protected windows that ensure insulation and comfort. Central heating and alarm system guarantee a safe and cosy atmosphere all year round. As well as terrace enclosures with insulated and armoured glass. For those sunny days, the private swimming pool of the urbanization is the perfect place to relax and enjoy the Mediterranean climate. The location is unbeatable. Cerrado de Calderón is known for its tranquillity and exclusivity, with easy access to all necessary services. Close to the Cerrado de Calderón School, renowned for its academic excellence. In addition, bus lines 33 and 35 connect this neighbourhood with the rest of the city, making it easy to get around. Malaga East is an area that combines residential tranquillity with proximity to the vibrant urban life of Malaga Capital. Its streets are lined with elegant homes and green areas, creating an ideal environment for families and those seeking a sophisticated lifestyle. The high demand for homes in El Limonar makes this townhouse an opportunity to visit today. You are sure to fall in love with it. Since 1983, GILMAR has been dedicated to helping its clients find the home of their dreams, offering a professional and personalised service that guarantees satisfaction and peace of mind in every real estate transaction. For more information about this property, please do not hesitate to contact our team at our Malaga office, located at Calle Cortina del Muelle 13, or by calling 951 23 33 33 33. You can also write to us at [malaga@gilmar.es](mailto:malaga@gilmar.es). Please provide reference 206265 so that we can assist you more efficiently.



PLANTA 1



## Interesse in deze woning? Contacteer uw makelaar.



Goeman Vastgoed Lede

**Sibille Goeman**

**052 52 80 30**

**[info@goemanvastgoed.be](mailto:info@goemanvastgoed.be)**

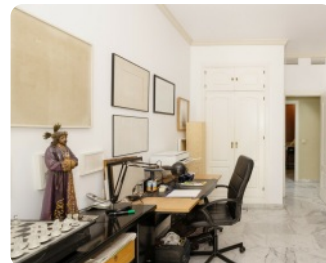


# Málaga

Townhouse in cerrado de calderón



[goemanvastgoed.be](http://goemanvastgoed.be)



Interesse in deze woning?  
Contacteer uw makelaar.



Goeman Vastgoed Lede

**Sibille Goeman**  
052 52 80 30  
[info@goemanvastgoed.be](mailto:info@goemanvastgoed.be)



# Málaga

Townhouse in cerrado de calderón



vastgoed & advies  
**goeman**

goemanvastgoed.be

## Financieel

Prijs: € 985.000

Onder BTW stelsel: **Nee**

## Gebouw

Bewoonbare oppervlakte: 245 m<sup>2</sup>

## Indeling

Slaapkamers: 4

Badkamers: 3

Interesse in deze woning?  
Contacteer uw makelaar.



Goeman Vastgoed Lede

**Sibille Goeman**

052 52 80 30

info@goemanvastgoed.be

